

INTERIOR DESIGN



PATRICK SUTTON

Baltimore, MD

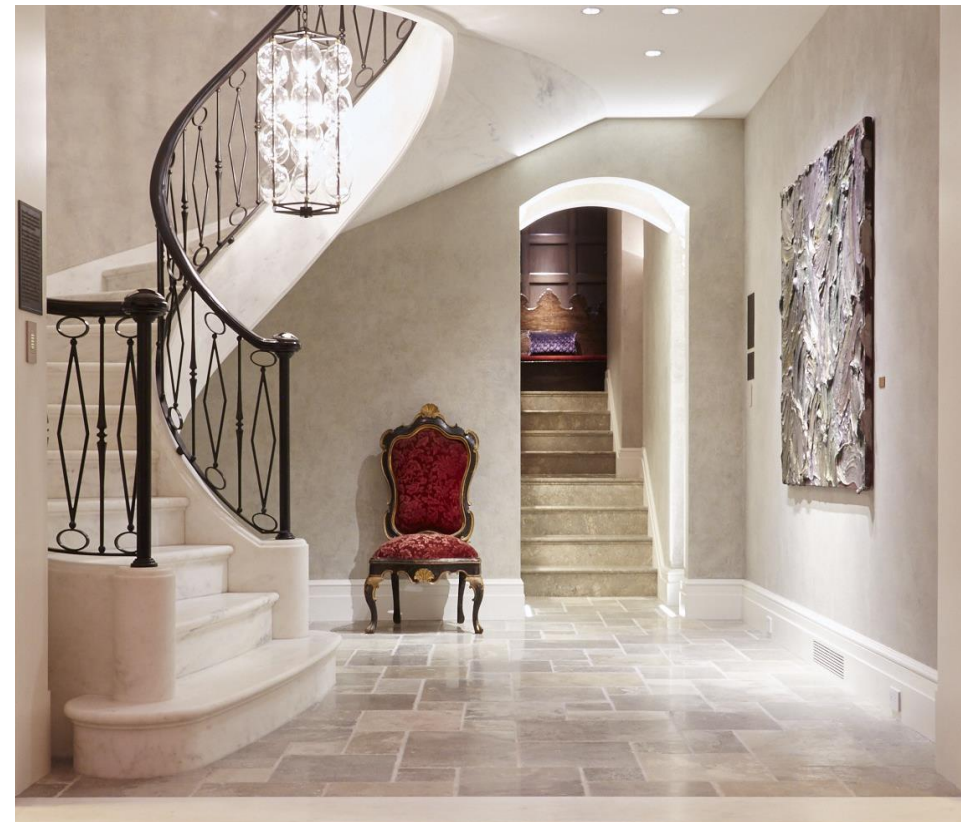
NEW LIFE FOR A STORIED HOME

Washington, D.C.

This historic Georgetown residence was once the home to Ambassador David Bruce and his wife Evangeline. Our client purchased it with the intent of updating the interior while maintaining its heritage as a welcoming place to entertain family and guests. The home underwent a full renovation, including digging out a new lower level “speakeasy”. The interior respects the classic nature of the home through its millwork and material details, and updates the art and furnishings to reflect more of the modern sentiments of its owner. The home, through its design and art curation, tells the story of the young entrepreneurial owners and their interest in contemporary thinkers, world exposure, quality of craft and respect for our nation’s capital and its traditions. The new marble stair, for instance, is fabricated from the same marble quarry that supplied the Thomas Jefferson Memorial. The art collection includes works from artists around the globe as well as storied contemporary and classical pieces. Each space is designed to carry a unique character while feeling part of a cohesive whole.

The interior is designed for entertaining, with gathering spaces throughout the first floor, including a ballroom that spills out to the courtyard garden. The new lower level includes a fun speakeasy style lounge for late night parties, fashioned with brick and steel vaulted ceiling, a bar, new restrooms and a wine and whiskey room at the top. The upper floors contain the master suite and a series of guest rooms, all of which have been named for favorite presidents.

Throughout the home the design looks to respect the traditions that make this neighborhood storied, but adds a new, youthful energy that make the house a warm and engaging place to live.



ARTISANSHIP - STONE



MARMI NATURAL STONE

Norcross, Georgia

MONUMENTAL STAIRCASE

Washington, D.C.

Originally built circa 1815, The Ambassador Bruce House, is arguably the most storied private home in Georgetown. In 2015, the property was purchased and an extensive restoration was undertaken, including the elliptical and cantilevered grand staircase.

The staircase stone was fabricated from the same domestic quarry as many of the historical monuments throughout Washington such as the Thomas Jefferson Memorial and weighed in excess of 12 tons and cost \$500,000. With 27 interlocking, self-supporting treads, each tread weighed anywhere from 850 pounds to 1,350 pounds. It took a team of 5 people eight weeks to install the staircase.

Special care was given to each piece as it arrived on site in Georgetown. To transport the treads through the small garden gate to the rear of the house, a golf cart was customized to carry the weight. A golf cart was the smallest motorized vehicle that could fit through the garden gate. Once the pieces were inside the house, a customized crane was built to hoist each tread into place as the staircase was installed.

The only structural components of steel in the project were landings at the intermediate and top landings. The balance of the staircase is supported using specialized engineering along with only $3\frac{1}{2}$ " of tread/riser combo inserted into concrete and block faced radial wall. The underside of the staircase is a fluid continuation of the solid tread/risers to create the illusion of a radial stone soffit.

Marmi's highly specialized technical team used 3D Drawings and modeling created in Rhino from 2D AutoCAD drawings to finalize extreme transitional challenges as well as create manufacturing parts milling information. Marmi is proud to have participated in this amazing collaboration between the designer, architect and general contractor to create such a beautiful and prized engineering feat in this historically significant property.

